



# PRESSURE GAUGE

## SA 40/9

(MOD. SA 40/9)

Stainless steel sanitary gauge  
with separator and logarithmic scale



Produttore qualificato  
M.O.C.A.  
Reg. CE n. 1935/2004



These instruments are designed for pressure measurement. Used in the food, chemical, petrochemical, conventional power plants and suitable to withstand the most unfavorable operating conditions, determined by the aggressiveness of the process fluid and the environment and for fluids that do not have a high viscosity or that do not crystallize.

Called separator which consists of a suitably shaped separation membrane, made of AISI 316 stainless steel. Pressure gauge and separator form a single body. The separator is equipped with a threaded connection according to the DN-SMS-IDF-CLAMP standards.

The pressure gauge with SABA separator is amortized as standard, so it can work even in case of strong pulsations without problems. Wide scale at the beginning and narrow at the bottom. For accurate readings of the pressure at low values and tolerance of high values during the washing phase by the same.

## TECHNICAL FEATURES:

**Measuring ranges:** 2.5 - 4 - 6 - 10 - 16 - 20 - 25 - 40 - 60 - 100 bar.

**Dial:** white with black lettering: dial Ø 63 - 100 - 150 mm

**Housing:** Ø 63 - 100 - 150 in stainless steel with Plexiglas glass with double U-seal

**Index:** in steel with zero-setting micrometric device

**Sensitive element:** Laser welded AISI 316 membrane

**Connection:** both radial and rear, according to DN - SMS - IDF - CLAMP standards

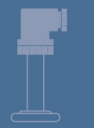
**Amplifier movement:** in stainless steel

**Filling liquid:** non-toxic

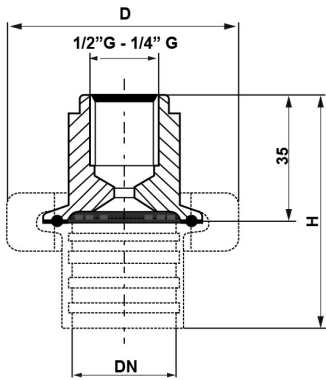
**Shock absorber:** built-in standard

**Accuracy:** 1% of the full scale value

**Degree of protection:** IP 65.



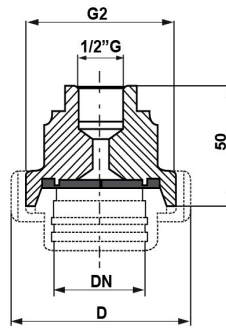
Connections to the process:



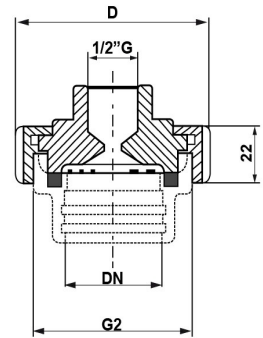
Diaphragm seals with **CLAMP**

DN	D	H
1 1/2"	72	64
2"	85	69

**CLAMP**



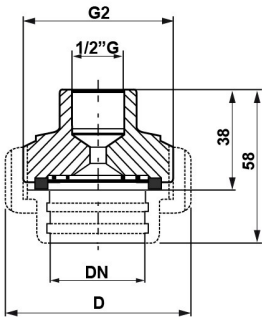
Diaphragm with male part **DIN 118551**



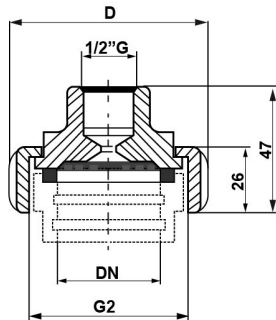
Diaphragm with nut **DIN 118551**

DN	D	G2
25	63	Rd52x1/6"
40	78	Rd65x1/6"
50	92	Rd78x1/6"

**DIN**



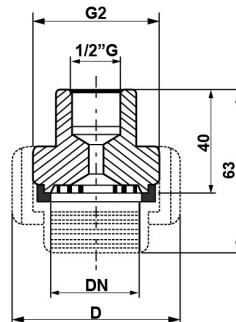
Diaphragm with male part **SMS**



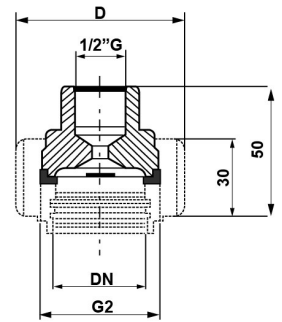
Diaphragm with nut **SMS**

DN	D	G2
1 1/2"	74	Rd60x1/6"
2"	84	Rd70x1/6"

**SMS**



Diaphragm with male part **IDF**



Diaphragm with nut **IDF**

DN	D	G2
1 1/2"	64	IDF 1 1/2"
2"	79	IDF 2"

**IDF**



**INDOOR**

## Certificates:

Certification of materials

MOCA certification (material objects in contact with food – on request)

Pressure gauge certification: ATEX (on request)

Pressure gauge calibration certificate (list of measured single values; 5 measurement points)

## Order information:

Scale field / Process connection / Parts / Certificates